

Cathode Diaphragm Curing Ovens

Batch Type



The Lanly Company has specialized in the engineering and manufacturing of custom ovens and dryers for over 60 years. **Innovative Design, Technical Excellence and Dependable Quality** are standard features of our heat treating ovens. Add to this our expertise in controls, and it is easy to see why Lanly systems deliver unequaled product uniformity and process efficiency.

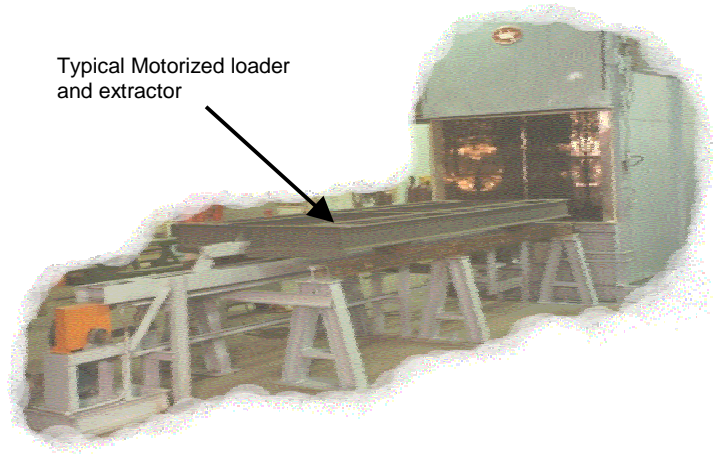
Lanly Batch Type Diaphragm Curing Ovens are designed and built specifically for Eltech Systems Corporation. Typical systems include:

- 1, 2 or 3 cell capacity
- Painted steel construction with stainless steel panels
- High volume air circulation for superior temperature uniformity
- Electric plug type heaters with sheath elements; longer lasting with lower maintenance
- Electric hoist lift door with pneumatic safety latches
- Motorized loader and extractor with wheeled cart
- Manual or Automatic system control; including ramp and soak periods and basic diagnostics

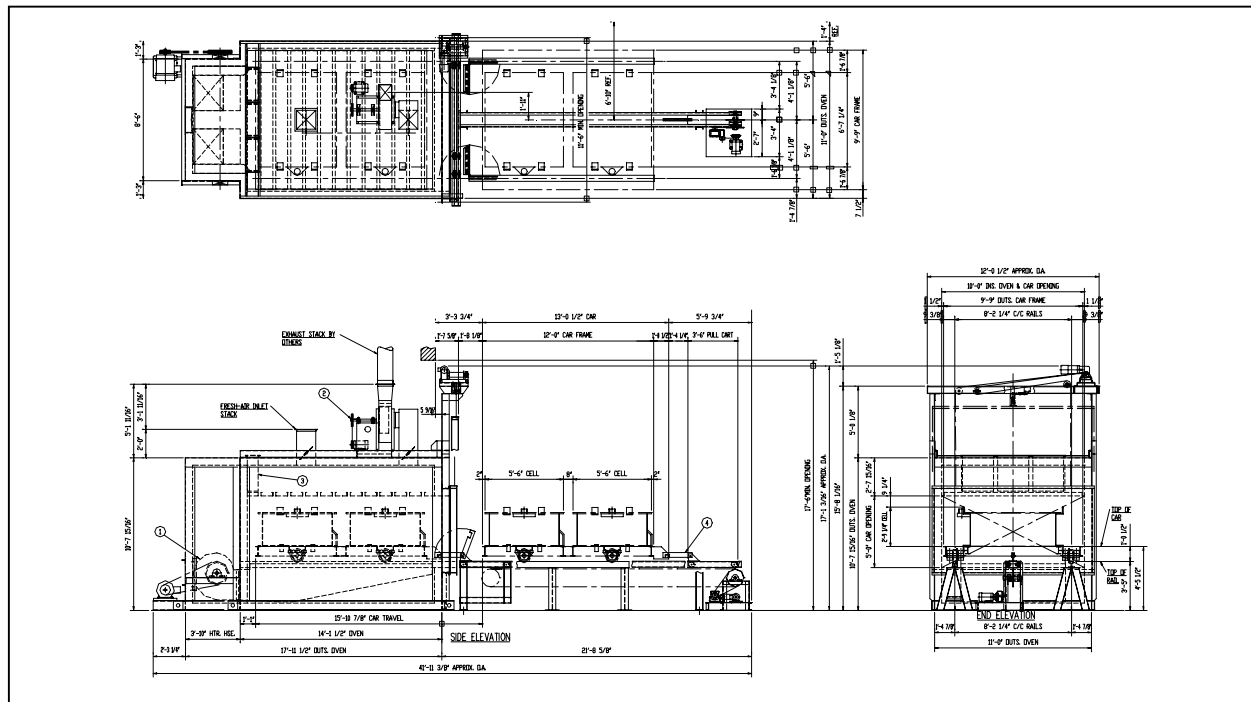


TYPICAL DESIGN SPECIFICATIONS

- ▶ Design production rate – 1, 2, or 3 cells per load
- ▶ Method of charging – Hot car with extractor
- ▶ Cell weight – 4,450 lb / cell
- ▶ Process time – Approximately eleven hours
- ▶ Cell dimensions – Approximately 66 in. long x 89 in. wide x 37 in. high
- ▶ Exhaust fan – 3,000 CFM
- ▶ Recirculation fan – 30,800 CFM
- ▶ Maximum supply air temperature - 750° F
- ▶ Fuel – Plug type electric heater; 250 kW
- ▶ Water evaporation – Approximately 250 lbs per cell
- ▶ Voltage - 480 Volts, 3 Phase, 60 Hertz



TYPICAL GENERAL ARRANGEMENT



The Lanly Company

26201 Tungsten Road
Cleveland, OH 44132

Phone: (216) 731-1115 Fax: (216) 731-7900

Email: lanly@lanly.com

Web: www.lanly.com