

Textile Systems



High Performance Loop Dryers

The Lanly Company has specialized in the engineering and manufacturing of recirculating convection textile dryers for over 60 years.

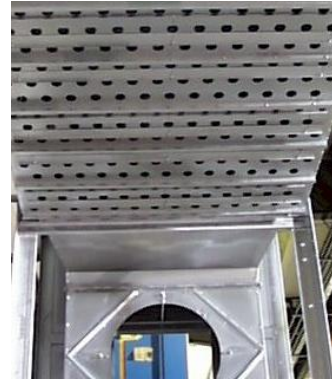
Lanly's newest generation of Loop Dryers are the preferred choice in applications where delicate webs require a minimum tension during the drying process. They are exceptionally suited for heavy pile products such as carpets, terry cloth and upholstery fabrics requiring comparably long drying time.

- Proven performance exceeding 4000 pounds of terry per hour
- High volume air circulation for superior side-to-side temperature uniformity and maximum production output
- Uniform vertical air flow ensures undisturbed loop and cloth position throughout the drying process
- Rotating girt mechanism minimizes cloth marking and extends service life of system
- Modular construction minimizes erection time

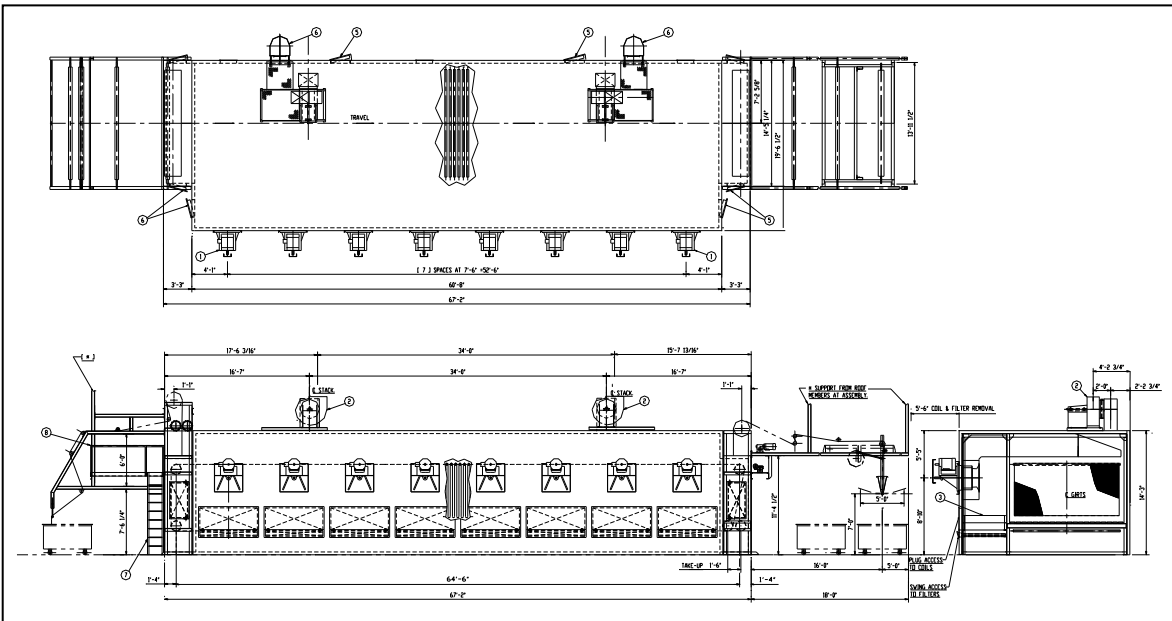


FEATURES

- ▶ Lanly insulated, interlocking panel construction. Aluminized steel interior and exterior surfaces.
- ▶ All ductwork is four-sided aluminized steel using radius inlet ports to provide a uniformly distributed blanket of air the full width of the dryer.
- ▶ Adjustable balancing dampers ensure airflow uniformity.
- ▶ Ribbed flooring serves as return air plenum and interior walkway for easy maintenance.
- ▶ Double lint screens are arranged for easy removal and access to the heat exchangers for cleaning.
- ▶ Full opening, gasketed access doors provide complete access to the oven for “walk-in” inspection and cleaning.
- ▶ Internal lighting and large inspection windows at dryer ends and on doors provide for confident routine inspection.
- ▶ Modular construction ensures rapid, trouble-free installation.



Interior section of system under construction showing upper air supply duct



TYPICAL DESIGN SPECIFICATIONS

- ▶ Material holding capacity – Eight (8) sections; 500 yards of cloth
- ▶ Production rate – Proven production rates in excess of 4000 lbs of terry cloth per hour
- ▶ Material width – 136 inches; Standard widths from 90 inches to 144 inches
- ▶ Material handling – Glass taped, rotating girts on 6 inch centers
- ▶ Recirculation system – Eight (8) fans; typically $\geq 25,000$ CFM, one per section
- ▶ Operating temperature – 350° F
- ▶ Heating system – Three (3) zones; Steam heat exchangers 180 PSI, one per zone
- ▶ Voltage – 460 Volts, 3 Phase, 60 Hertz
- ▶ Drives – AC variable frequency



The Lanly Company

26201 Tungsten Road
Cleveland, OH 44132

Phone: (216) 731-1115 Fax: (216) 731-7900

Email: sales@lanly.com

Web: www.lanly.com